



THE SINGULAR SPACE
EXTRAORDINARY PROPERTIES



A perfect property for an entrepreneur with a dream. Madrid
Ref. S113

Nestled in the Alberche river basin is a rather fetching (and substantial) rural property.

9 habitaciones
6 baños
4.000 m² de superficie
9 Ha de terreno

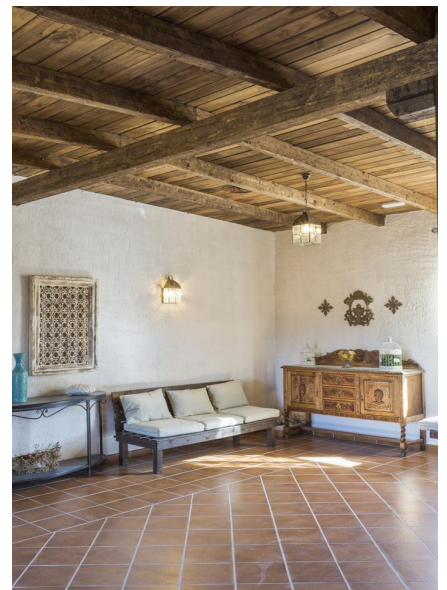
The house itself covers a total built area of 4,000 m², all impeccably presented, comprising several reception rooms (some over 300 m²), bathrooms and offices. With its largely open-plan layout, it's the perfect blank canvas to bring your ideas to life.

Set in picturesque grounds of some 90,000 m², amid a bounty of holm oaks, olive trees and rock roses, this unique property is en route to Madrid and directly accessible from the main road—the ideal spot to pursue your business dreams.

To the west of the main property we find various ancillary buildings, offering nine bedrooms, a number of reception rooms and a heated indoor swimming pool.

One of this property's most compelling USPs is its very handy location, barely 65 km from Madrid.

With this extraordinary find all ready to realise your vision, why look any further?



Contacto

C/ Julián Camarillo, 47 B203
28037 Madrid
+91 388 97 74 / +34 630 344 539
hello@thesingular.space



THE SINGULAR SPACE
EXTRAORDINARY PROPERTIES





THE SINGULAR SPACE
EXTRAORDINARY PROPERTIES





THE SINGULAR SPACE
EXTRAORDINARY PROPERTIES





THE SINGULAR SPACE
EXTRAORDINARY PROPERTIES

