



THE SINGULAR SPACE

EXTRAORDINARY PROPERTIES



Large hacienda-inspired home just minutes from the city centre.

Madrid

Ref. S162

Located in one of the city's most prestigious developments, with beautiful gardens, a private swimming pool and views of the Madrid skyline.

6 habitaciones

6 baños

740 m² de superficie

2.500 m² de terreno

This stunning Mexican hacienda-inspired property with a hint of the Med is located near Aravaca by the Puerta de Hierro golf club, just minutes from peaceful green spaces such as El Pardo and La Casa de Campo, prestigious international schools and the hustle and bustle of the big city.

The creative blend of styles lends this unique home an eclectic feel and a unique personality. Some parts, such as the garden and the swimming pool, make you feel like you're soaking up the Mediterranean rays in Ibiza; others, like the hall and the porch, bring a more colonial, Mexican hacienda vibe, with an original outside design featuring weathering steel accents.

The primary residence spans 740 sqm over three floors, set on a beautifully landscaped 2,500 sqm plot with everything you could ever need for downtime and leisure.

As we pass through the main entrance - a crown-shaped show-stopper with white, arched, lacquered wood doors - we find ourselves in a sweeping 50 sqm entrance hall leading onto various different spaces. The eye is instantly drawn to a spectacular staircase framing the stunning chandelier which, suspended from a domed ceiling, casts its glow throughout this elegant space.

Each of the rooms features a large fireplace and has been carefully designed with large windows to make the most of natural light, another strong point of this beautiful home.

Also on the ground floor are two generously-proportioned bedrooms with garden views and the staff area, including a full kitchen and food-prep area, a pantry, a staff bedroom with its own private bathroom and a laundry area. The kitchen opens onto the rear section of the garden and the barbecue area, and onto a charming dining room which leads in turn to the main living room. This spacious, inviting room offers views of the main area of the garden and the pool through one of the porches, which has been equipped for use all year round.

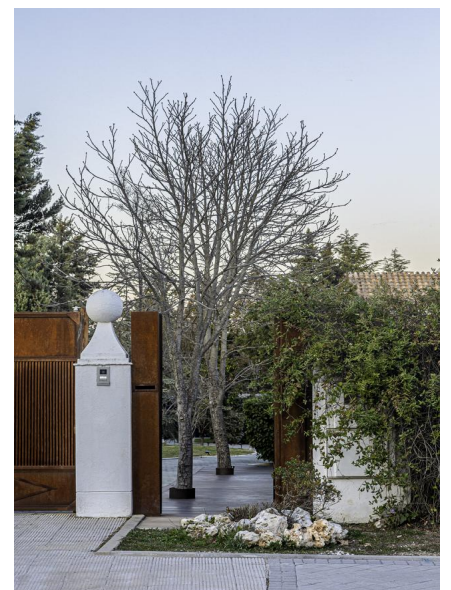
The immaculately landscaped garden is spectacular, with well-established plant life and a large Ibiza-inspired pool. The property has several living rooms, as well as a summer dining area and sports facilities including its own padel and basketball courts.

Access to the first floor is via an impressive American oak staircase; this level features three large, 30 sqm bedrooms, each with its own en-suite bathroom. The main bedroom has its own private living space with a fireplace, a private dressing room and a stunning, 18 sqm Travertine marble bathroom. The main bedroom offers access - via a beautiful spiral staircase - to another of the property's star features: the tower, which is currently used as a study/workshop and affords spectacular views of the Madrid skyline, as well as a spacious sun deck.

An unfinished, full-floor basement area, accessible from the rear section of the garden, offers the perfect opportunity to expand the property should you wish to.

The property has been exquisitely refurbished with high-end materials, and every room has been carefully designed to enhance its own particular characteristics.

There is electric heating with independent thermostats in each room, and air conditioning in certain spaces. There is indoor parking for four vehicles and



Contacto

C/Julián Camarillo, 47 B203
28037 Madrid
+91 388 97 74 / +34 630 344 539
hello@thesingular.space

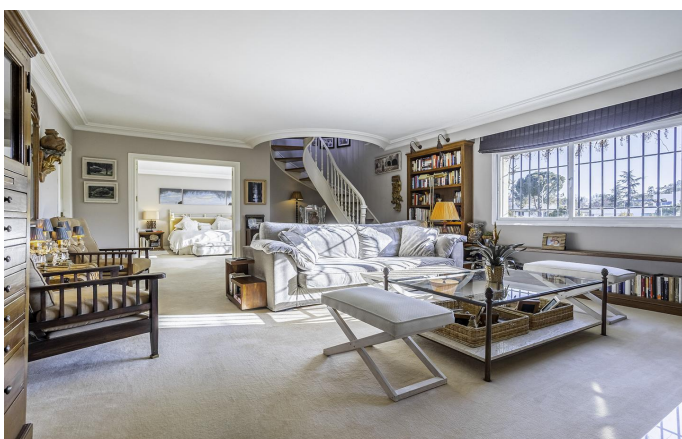


THE SINGULAR SPACE
EXTRAORDINARY PROPERTIES





THE SINGULAR SPACE
EXTRAORDINARY PROPERTIES



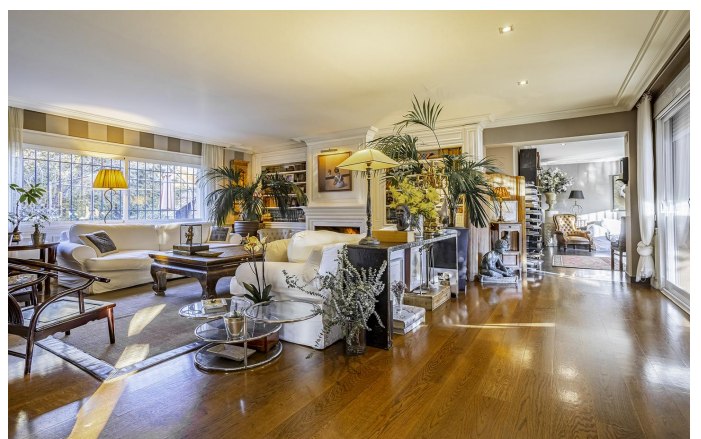


THE SINGULAR SPACE
EXTRAORDINARY PROPERTIES





THE SINGULAR SPACE
EXTRAORDINARY PROPERTIES





THE SINGULAR SPACE
EXTRAORDINARY PROPERTIES





THE SINGULAR SPACE
EXTRAORDINARY PROPERTIES





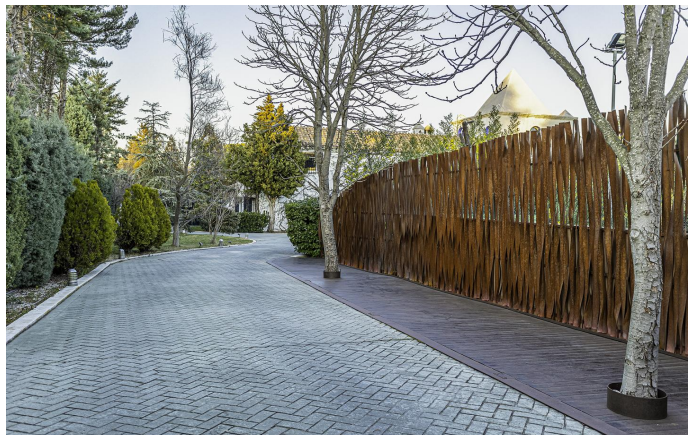
THE SINGULAR SPACE
EXTRAORDINARY PROPERTIES





THE SINGULAR SPACE

EXTRAORDINARY PROPERTIES



Contacto

C/ Julián Camarillo, 47 B203
28037 Madrid
+91 388 97 74 / +34 630 344 539
hello@thesingular.space