



THE SINGULAR SPACE

EXTRAORDINARY PROPERTIES



An Inhabited Church in Trujillo. Cáceres Ref. S240

A 16th-century church converted into a private residence in the historic heart of Trujillo.

Precio €1.500.000
7 habitaciones
6 baños
825 m² de superficie
788 m² de terreno

Within Trujillo's historic quarter, beyond the emblematic Arch of San Andrés, lies this truly exceptional property: a 16th-century deconsecrated church, now transformed into a private residence, positioned opposite a historic water cistern and complemented by two independent guest houses.

An impeccable transformation from church to home, where monumental architecture and contemporary living converse with complete naturalness — a singular way of inhabiting history.

Founded in 1518 as the Church of San Andrés, the property retains the strength and scale of its origin. Its stone volumes, soaring height, and atmosphere make it a residence impossible to replicate. Facing it stands the Alberca de Trujillo, a cistern carved directly into the living rock that defines the character of the setting. The guest houses, included within this exceptional residential ensemble, open onto this historic space.

The building forms part of the city's deepest heritage. Its original architecture, conceived to shelter, elevate, and endure, continues to shape the experience of inhabiting the property: thick stone walls, monumental proportions, and a spatial presence that transcends the concept of a conventional home.

The ensemble — church residence and guest houses — totals approximately 825 sqm built, arranged across a principal residence and two fully independent guest houses, set on a plot of around 788 sqm, with outdoor spaces seamlessly integrated into the historic fabric of the surroundings.

At the heart of the principal residence lies its extraordinary grand living hall, remarkable for its scale and height, anchored by two fireplaces, where natural light, stone, and original proportions create a serene, enveloping, and deeply evocative atmosphere. A space designed not only to be lived in, but to be enjoyed with calm and intention.

The main residence is completed by three spacious bedrooms, each with en-suite bathroom, integrated with respect for the original architecture; a generously proportioned kitchen with fireplace; sitting areas; a magnificent garden; and a belvedere. The materials — stone, terracotta, and wood — reinforce the constant dialogue between past and present, bringing coherence, warmth, and authenticity.

Opposite the church stands the Alberca de Trujillo, an impressive cistern carved into the bedrock, fed by natural springs and historically linked for centuries to the city's water supply. Its presence defines the immediate setting and adds a unique historical and sensory dimension to the daily experience of living here.

The two guest houses, independent and positioned facing the cistern, enjoy complete privacy and include a spacious garage. One features a private garden, living room, kitchen, and two en-suite bedrooms; the other offers a living area with open-plan kitchen and two bedrooms with a full bathroom. Their configuration makes them an ideal solution for guests, extended family, or complementary residential use — always from a place of exclusivity and respect for the setting.

The ensemble underwent a comprehensive renovation carried out with strict heritage criteria, aimed at enhancing comfort, functionality, and efficiency, without altering the architectural essence of the building.

The property is delivered with the vast majority of the furnishings included, excluding personal items, allowing for immediate occupancy in harmony with the atmosphere of the residence.

To live here is not merely to reside in a singular property; it is to become part of the historic heart of Trujillo, of its legacy, and of a story that remains alive in every

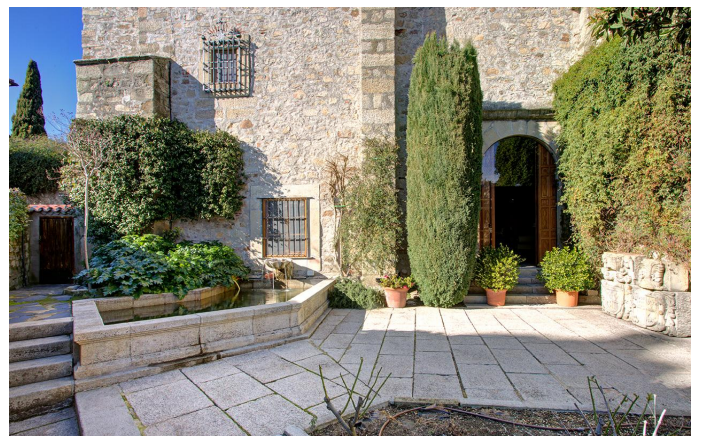


Contacto

C/Julián Camarillo, 47 B203
28037 Madrid
+91 388 97 74 / +34 630 344 539
hello@thesingular.space



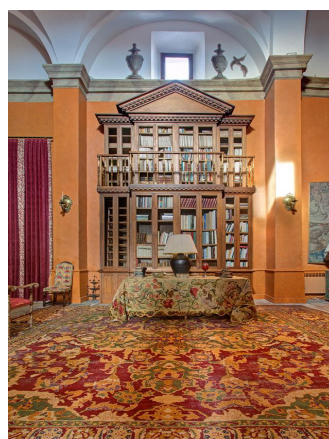
THE SINGULAR SPACE
EXTRAORDINARY PROPERTIES





THE SINGULAR SPACE

EXTRAORDINARY PROPERTIES

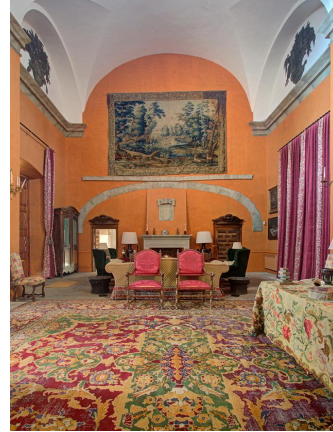


Contacto

C/ Julián Camarillo, 47 B203
28037 Madrid
+91 388 97 74 / +34 630 344 539
hello@thesingular.space



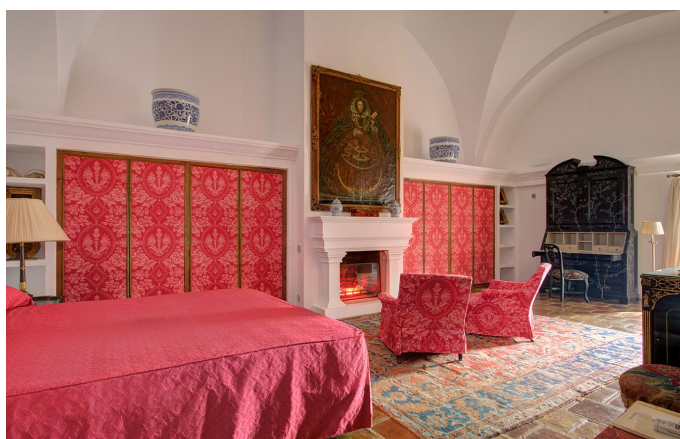
THE SINGULAR SPACE
EXTRAORDINARY PROPERTIES





THE SINGULAR SPACE

EXTRAORDINARY PROPERTIES

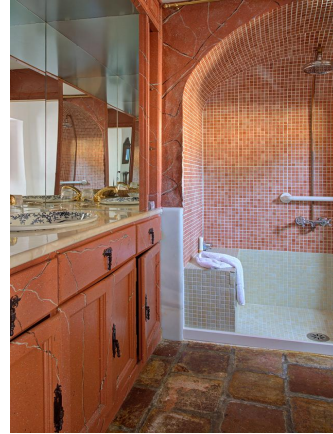


Contacto

C/Julián Camarillo, 47 B203
28037 Madrid
+91 388 97 74 / +34 630 344 539
hello@thesingular.space



THE SINGULAR SPACE
EXTRAORDINARY PROPERTIES





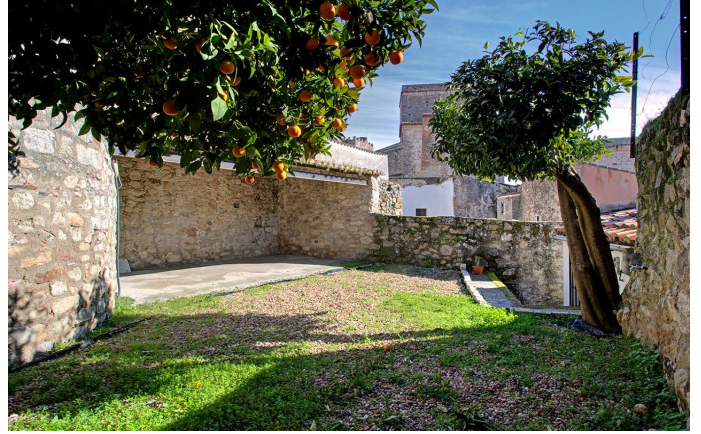
THE SINGULAR SPACE
EXTRAORDINARY PROPERTIES





THE SINGULAR SPACE

EXTRAORDINARY PROPERTIES



Contacto

C/Julián Camarillo, 47 B203
28037 Madrid
+91 388 97 74 / +34 630 344 539
hello@thesingular.space