



THE SINGULAR SPACE  
EXTRAORDINARY PROPERTIES



**Charming and unusually spacious  
period home in rural village**

**location. Soria**

**Ref. S34**

Eighteenth-century village home in immaculate condition, offering comfortable, well-appointed accommodation with delightful original features and plenty of outdoor space.

**4 habitaciones**

**2 baños**

**400 m<sup>2</sup> de superficie**

**318 m<sup>2</sup> de terreno**

An absolutely charming period village home in immaculate move-in condition, this special property would make an outstanding base for country pursuits and outdoor sports, with plenty of space for guests.

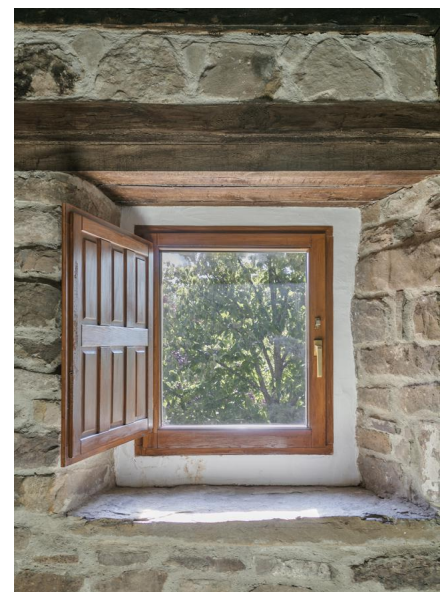
An absolutely charming period village home in immaculate move-in condition, this special property would make an outstanding base for country pursuits and outdoor sports.

Built in the eighteenth century in the heart of the village, the property is one of a cluster of beautifully conserved period homes that once belonged to the medieval Castilian farmers' guild, the Mesta. Now fully renovated and offering every modern convenience, this lovely home still exudes a sense of history and tradition, with its half-timbered exterior and a myriad of period features.

One of the larger homes in the village, this two-storey property has a total built area of 400 m<sup>2</sup>. Upstairs it offers four generous bedrooms, two bathrooms, two spacious living rooms (one with a fireplace and one with a wood-burning stove), open-plan dining kitchen with breakfast bar, a broad hallway that doubles as a library. The ground floor features a large living room, a bedroom, a boiler room and a large open-plan space currently used as a utility room.

Outside, there is a spacious walled courtyard with a brick stove and a large stone pavilion that's perfect for casual summer entertaining. The property's gracious proportions make it highly versatile, and although immaculately presented there is plenty of scope for making it your own. If it suits, the price also includes: 2 double beds, 2 single beds, 1 bunk bed, fridge, dishwasher, washing machine, fireplace and a wood burning stove.

The village is set in a bucolic section of the Sorian Highlands, just 25 km from Soria itself. The area is largely agricultural (mostly sheep farming) and is distinctive for its extensive holly groves. It's a popular destination for outdoor pursuits, including hunting, hiking, mountain biking and horse riding, and there's a golf course less than 25 minutes away.



**Contacto**

C/Julián Camarillo, 47 B203  
28037 Madrid  
+91 388 97 74 / +34 630 344 539  
hello@thesingular.space



THE SINGULAR SPACE  
EXTRAORDINARY PROPERTIES





THE SINGULAR SPACE

EXTRAORDINARY PROPERTIES

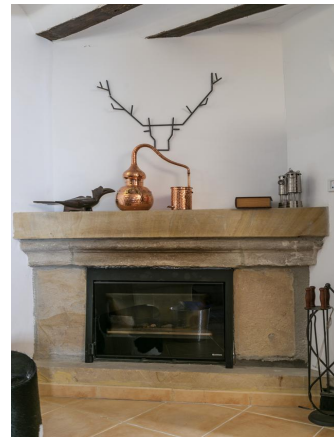


#### Contacto

C/Julián Camarillo, 47 B203  
28037 Madrid  
+91 388 97 74 / +34 630 344 539  
[hello@thesingular.space](mailto:hello@thesingular.space)



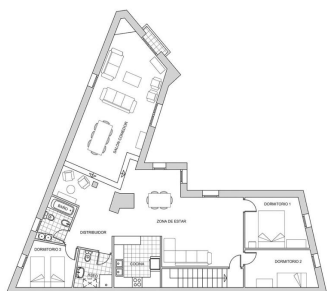
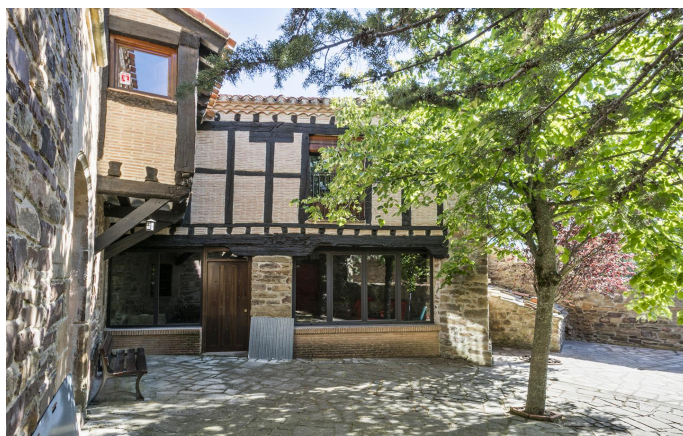
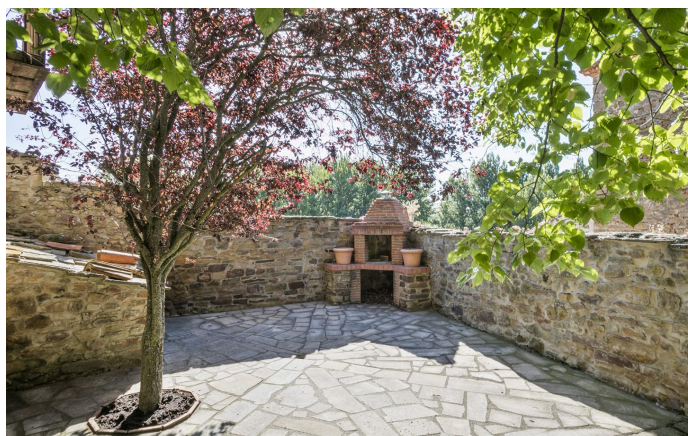
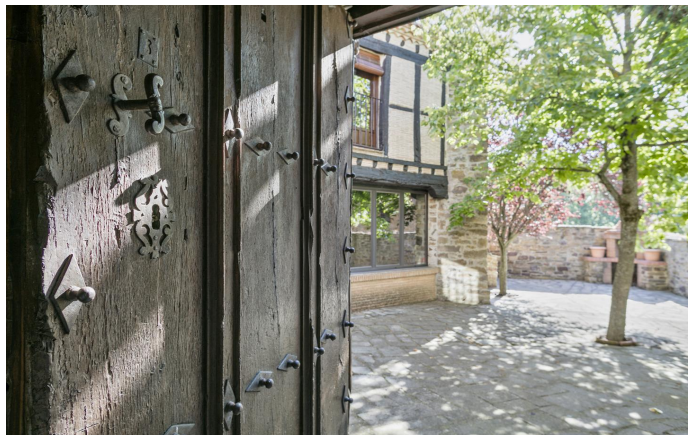
THE SINGULAR SPACE  
EXTRAORDINARY PROPERTIES





THE SINGULAR SPACE

EXTRAORDINARY PROPERTIES



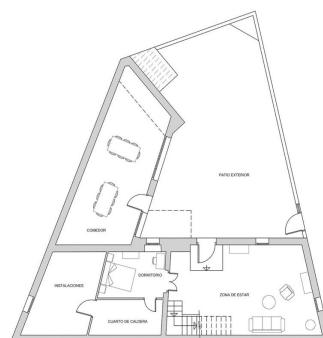
#### Contacto

C/Julián Camarillo, 47 B203  
28037 Madrid  
+91 388 97 74 / +34 630 344 539  
[hello@thesingular.space](mailto:hello@thesingular.space)



## THE SINGULAR SPACE

EXTRAORDINARY PROPERTIES



### Contacto

C/Julián Camarillo, 47 B203  
28037 Madrid  
+91 388 97 74 / +34 630 344 539  
[hello@thesingular.space](mailto:hello@thesingular.space)