



THE SINGULAR SPACE
EXTRAORDINARY PROPERTIES



**Ethereal woodland mill house
retreat with beautiful interior, less
than an hour from Madrid. Madrid
Ref. S35**

Converted water mill in a beautiful, bucolic setting in the Sierra del Rincon biosphere reserve, exquisitely presented and offered for sale with furnishings and 4WD for access - Mill - Madrid.

**4 habitaciones
3 baños
200 m² de superficie
5.6 Ha de terreno**

Drive north from Madrid for a little under an hour, and you might just stray into a curiously Tolkeinesque landscape of native forest, bubbling brooks and shady groves. You may even happen upon this charming former watermill, standing all alone amid towering oak, pine, holly and poplar trees.

This unique mill exists in a Tolkeinesque landscape of native forest and bubbling brooks, but you can be in Madrid in less than one hour. It even provides its own solar power.

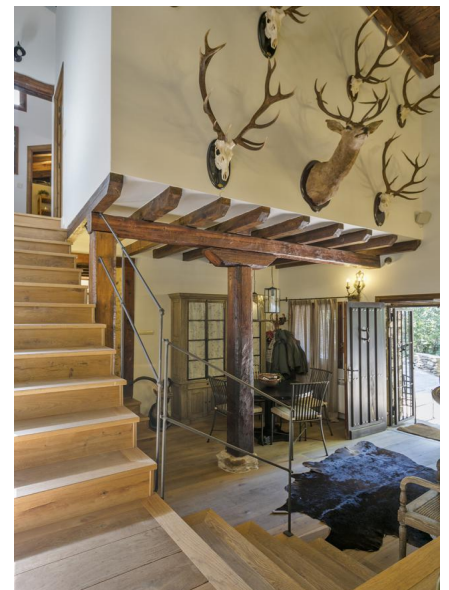
This is the Sierra del Rincón biosphere reserve, a beautiful, bucolic setting and a magical place to escape to after a long day in the city. If you feel like company, there are numerous charming villages dotted around the reserve, the closest being 3.5 km away.

This unique mill lies at the end of a dirt track (obligingly, the current owners are throwing in a 4WD with the house).

The former mill extends over a built area of 200 m² and was comprehensively renovated in 2009. All of the installations are brand new: diesel heating, generator, solar panels, fire prevention system, washing machine, dryer and septic tank. All of the access roads and their respective bridges have been fully restored, ensuring the utmost respect for the local surroundings.

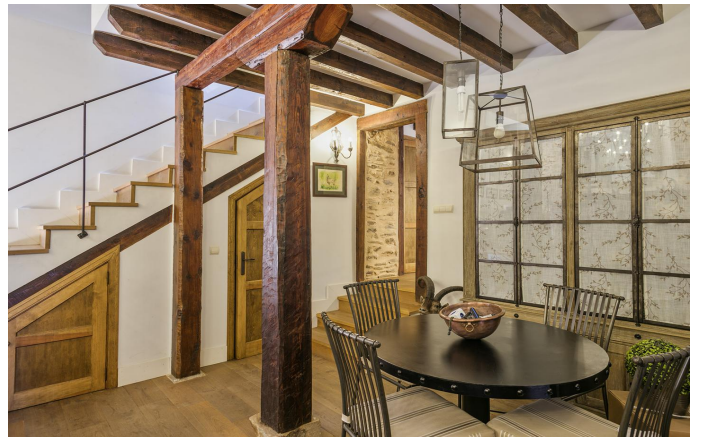
It has clearly been blessed with devoted owners; showcasing original features and the finest local materials, including painted wallpaper, solid oak flooring and tastefully curated furnishings. The hub of the house is undoubtedly the impressive double-height living room, warmed by a wide stone fireplace. Completing the ground floor is a kitchen with a convenient pantry, a guest bathroom and a wide porch fronting on to the river. The upper level comprises four bedrooms (including two 4-bed bunkrooms) and two bathrooms, sleeping up to 12.

This is a wonderful opportunity to secure a unique mill offering a sophisticated, peaceful woodland retreat less than an hour from the capital, sure to appeal to a wide range of buyers.





THE SINGULAR SPACE
EXTRAORDINARY PROPERTIES





THE SINGULAR SPACE

EXTRAORDINARY PROPERTIES





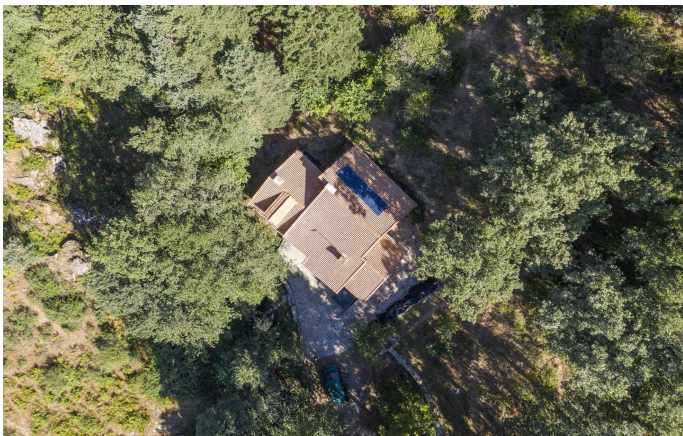
THE SINGULAR SPACE

EXTRAORDINARY PROPERTIES





THE SINGULAR SPACE
EXTRAORDINARY PROPERTIES





THE SINGULAR SPACE

EXTRAORDINARY PROPERTIES

