



## THE SINGULAR SPACE

EXTRAORDINARY PROPERTIES



### Peaceful but grand country retreat. Barcelona

**Ref. S4**

An imposing mansion house with fantastic views, situated within approximately 20 hectares of land and located in a peaceful rural setting.

**10 habitaciones**

**10 baños**

**4.200 m<sup>2</sup> de superficie**

**20 Ha de terreno**

The estate has had multiple uses over its history, from a grand stately family home, to a health clinic, to its existing use as a relaxation and meditation retreat and a youth hostel and comprises various properties surrounded by charming gardens, grounds, and enchanting wooded countryside.

This unique country estate is an imposing property, set in 20 hectares of glorious countryside in an attractive and accessible part of northern Spain near Barcelona (45 min drive).

The main house is comprised of two properties: the "Casa de la Marquesa", which dates back to the 17th Century, and the former health clinic, both of which are connected by two galleries. Both properties are arranged over 4 floors and benefit from 2,500 m2 of built area.

This main property currently features meeting rooms, dining rooms, a kitchen, bedrooms and various multi-use spaces.

This unique country estate is of great architectural importance and is generally in a good state of repair, boasting wonderful classical features, such as red stone doorjambs and lintels, an arch with an inscription from 1635 and defensive turrets.

Other properties on the estate comprise 600 m2 of built area and include a church, groundsman's cottage and a storage area.

This is a special opportunity to acquire a striking and unique country estate with superb potential for multi-generational living or commercial use, with current planning allowing for multiple uses including hotel, restaurant, arts and education.

The landscape and setting are idyllic and yet the property is far from remote, being located 65 km from Barcelona in the Osona region and on the edge of the Montseny National Park (UNESCO Biosphere Reserve) and close to the Montanyà golf course.



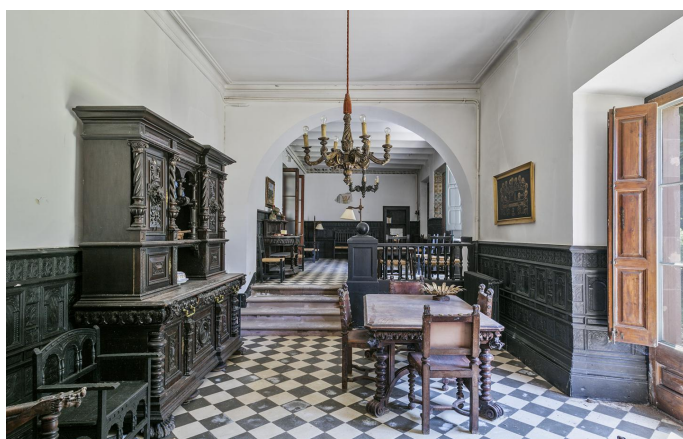
#### Contacto

C/ Julián Camarillo, 47 B203  
28037 Madrid  
+91 388 97 74 / +34 630 344 539  
hello@thesingular.space



THE SINGULAR SPACE

EXTRAORDINARY PROPERTIES



#### Contacto

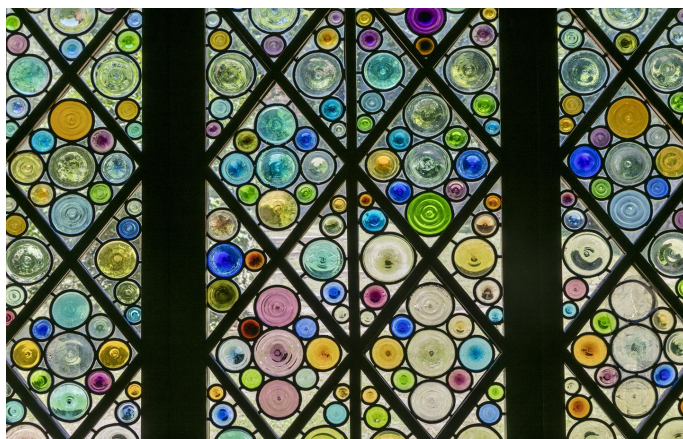
C/Julían Camarillo, 47 B203  
28037 Madrid  
+91 388 97 74 / +34 630 344 539  
[hello@thesingular.space](mailto:hello@thesingular.space)





THE SINGULAR SPACE

EXTRAORDINARY PROPERTIES



#### Contacto

C/ Julián Camarillo, 47 B203  
28037 Madrid  
+91 388 97 74 / +34 630 344 539  
[hello@thesingular.space](mailto:hello@thesingular.space)





THE SINGULAR SPACE  
EXTRAORDINARY PROPERTIES



Contacto

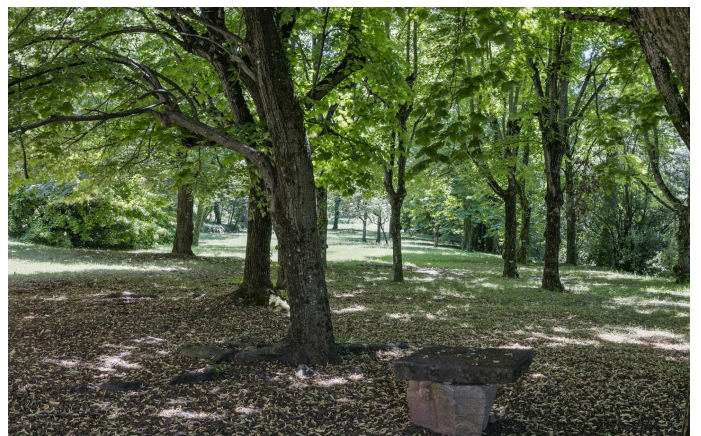
C/Julían Camarillo, 47 B203  
28037 Madrid  
+91 388 97 74 / +34 630 344 539  
[hello@thesingular.space](mailto:hello@thesingular.space)





THE SINGULAR SPACE

EXTRAORDINARY PROPERTIES



#### Contacto

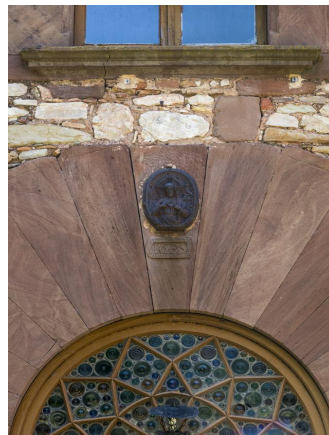
C/Julían Camarillo, 47 B203  
28037 Madrid  
+91 388 97 74 / +34 630 344 539  
[hello@thesingular.space](mailto:hello@thesingular.space)





THE SINGULAR SPACE

EXTRAORDINARY PROPERTIES



#### Contacto

C/Julían Camarillo, 47 B203  
28037 Madrid  
+91 388 97 74 / +34 630 344 539  
[hello@thesingular.space](mailto:hello@thesingular.space)